

Sample: 1810CH0391.1720

Strain: Elektra

Batch#: ; Batch Size: - grams

Sample Received: 10/24/2018; Report Created: 11/07/2018; Expires: 11/07/2019

Harvest/Production Date:

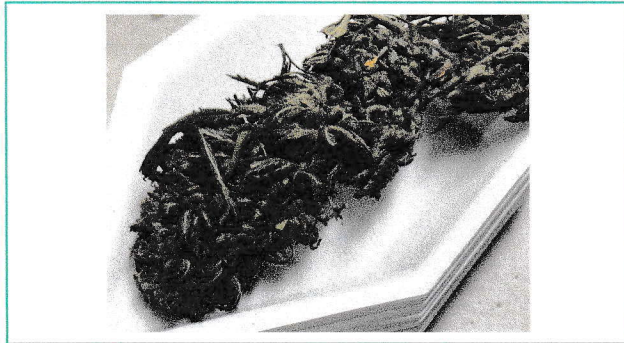
Sampling: Random; Environment: Room Temp

Lic. #AG-R1040925IHG

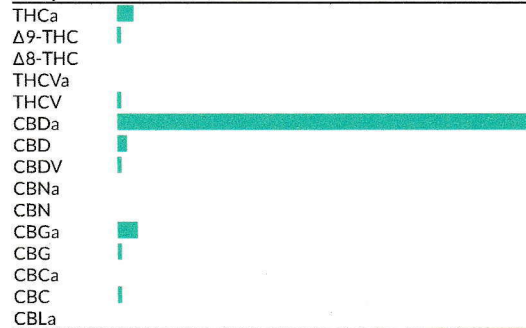
OF - Elektra

Plant, Flower - Cured, Outdoor

Harvest Process Lot: ; METRC Batch: ; METRC Sample:



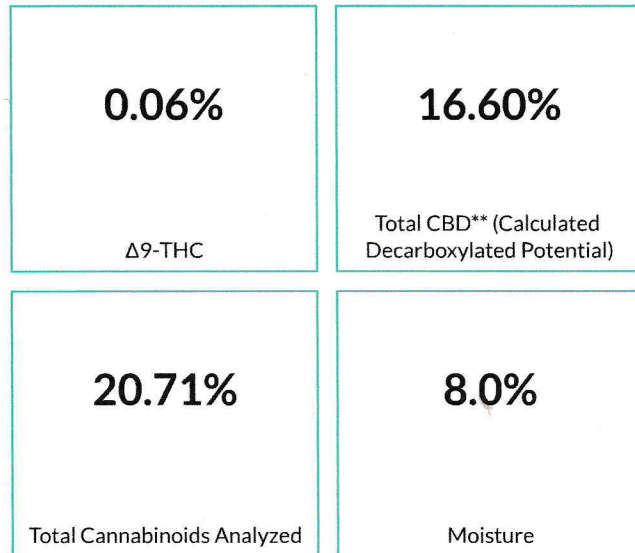
Analyte



Cannabinoids

154 HPLC4 20181025-2
10/25/2018

Pass



Analyte	LOQ	Mass	Mass
	mg/g	%	mg/g
THCa	0.2	0.69	6.9
Δ9-THC	0.2	0.06	0.6
Δ8-THC	0.2	<LOQ	<LOQ
THCVa	0.2	<LOQ	<LOQ
THCV	0.2	0.02	0.2
CBDa	0.2	18.44	184.4
CBD	0.2	0.43	4.3
CBDV	0.2	0.03	0.3
CBNa	0.2	<LOQ	<LOQ
CBN	0.2	<LOQ	<LOQ
CBGa	0.2	0.88	8.8
CBG	0.2	1.0	1.0
CBCa	0.2	<LOQ	<LOQ
CBC	0.2	0.07	0.7
CBLa	0.2	<LOQ	<LOQ
Total		20.71	207.1

*Total THC = THCa * 0.877 + d9-THC. **Total CBD = CBDa * 0.877 + CBD. LOQ = Limit of Quantification; NR = Not Reported; ND = Not Detected